

BAGS FOR KIDS

SEWING INSTRUCTIONS

Finished bags should resemble a standard size pillowcase

Materials provided:

- * Fabric - about 36 x WOF (Width of Fabric)
- * Plastic Triangles: one large, one small (used as markers)

Top Casing: Finished casing will be 2 $\frac{1}{4}$ inch.

1. Place the wrong side of fabric up. Using the small triangle as a measurement tool, turn down each corner of the fabric. (About 3" on each corner). (**Illustration A**)
2. Place a small tacking stitch at the inside corner of the folded triangle. This "Stay Stitch" will help keep the corner flat and in place.
3. To form the casing, working with the raw edge, turn under $\frac{1}{4}$ " then continue to fold down top of fabric even to the bottom edge of the triangle and pin in place. (**Illustration B**)
4. Stitch as close to the folded edge as possible. This forms the casing.

Bag Formation:

1. Fold bag in half and sew side and bottom seams using a $\frac{3}{8}$ " to $\frac{1}{2}$ " inch seam width. Start stitching just below casing ensuring you backstitch at beginning and end.

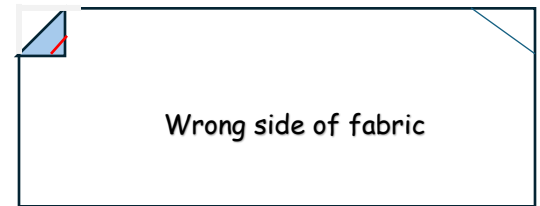
Boxing Bag: (Illustration C) Bag should be wrong side out.

1. Flatten your bag and on the side without a seam, near the seam line, finger press or place a pin to indicate center of fabric.
2. On seam side, match bottom seam to side seam. This will form a triangle when point of seams match. Using the large plastic triangle as a measurement tool, line up the plastic piece with the triangle on the bag and draw a line across the bottom of the plastic. This will be your stitching line. Pin as necessary.
3. Stitch from edge to edge, back stitching at the beginning and end of the stitch line to add extra security.
4. Repeat on the other side but instead of a side seam, match the bottom bag seam to the center of the fabric.

Finished Bag

1. Turn bag right side out. Bag is complete and ready for cording.
2. Cord will be inserted at a different table.

Illustration A





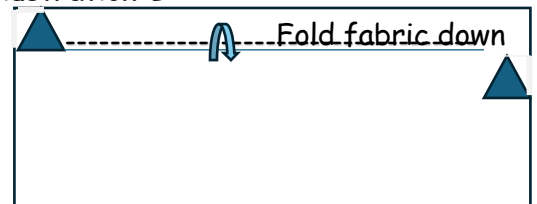
-  Corner folded down the size of the small plastic triangle
-  Tacking stitch on corners of folded triangle

Illustration B




-  Remaining part of folded triangle visible from above
- Stitch line close to folded edge

Illustration C

